



TECHNICAL REPORT

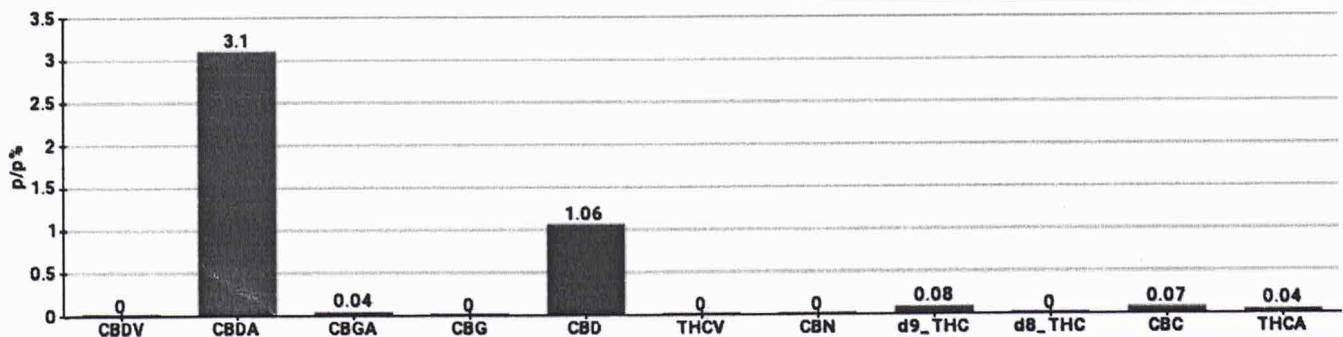
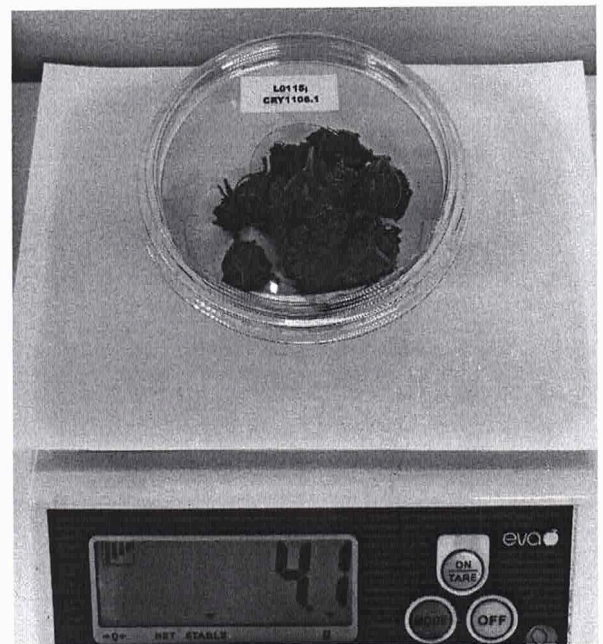
Committente	Crystal srl	Etichetta	L0115
Data accettazione	11/06/2020	Tipologia campione	Infiorescenza
Data analisi	12/06/2020	Varietà	Carmagnola
Codice riferimento interno	CRY1106.1	N. Cartellino	B37009201800001
Metodica analitica	HPLC - HS - Rev.2	Campionamento	a cura del cliente

Lotto

Note:

Parametro	%p/p	Metodo
CBDV	<0.01%	HPLC-UV
CBDA	3.10%	HPLC-UV
CBGA	0.04%	HPLC-UV
CBG	<0.01%	HPLC-UV
CBD	1.06%	HPLC-UV
THCV	<0.01%	HPLC-UV
CBN	<0.01%	HPLC-UV
d9_THC	0.08%	HPLC-UV
d8_THC	<0.01%	HPLC-UV
CBC	0.07%	HPLC-UV
THCA	0.04%	HPLC-UV
CBD TOTALE	3.78%	CALCOLATO
CBG TOTALE	0.03%	CALCOLATO
THC TOTALE	0.11%	CALCOLATO

CAMPIONE ANALIZZATO: Carmagnola(5.00gr)



Pineto

12/06/2020